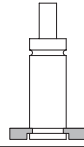


# Special Mounts

---

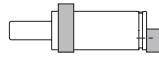
**LUG K**



**Page 3.1/2**

---

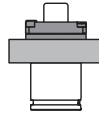
**HM**



**Page 3.1/3**

---

**FCSC**



**Page 3.1/4**

---

## K

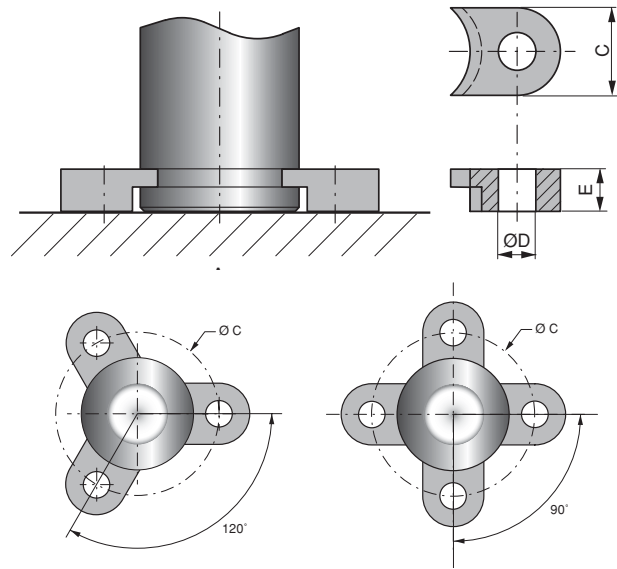
Lug K is used to clamp the spring to the tool. The gas springs can be clamped down using two, three or four lugs.

If only two lugs are used, a locking plate L is also required for fixing the gas spring. **Note:** If using the locking plate L with the K lugs, the spring cannot be hoses together as the L-plate will cover the port of the gas spring.

The K lugs are only to be used to mount the spring vertically. Black oxide finish.

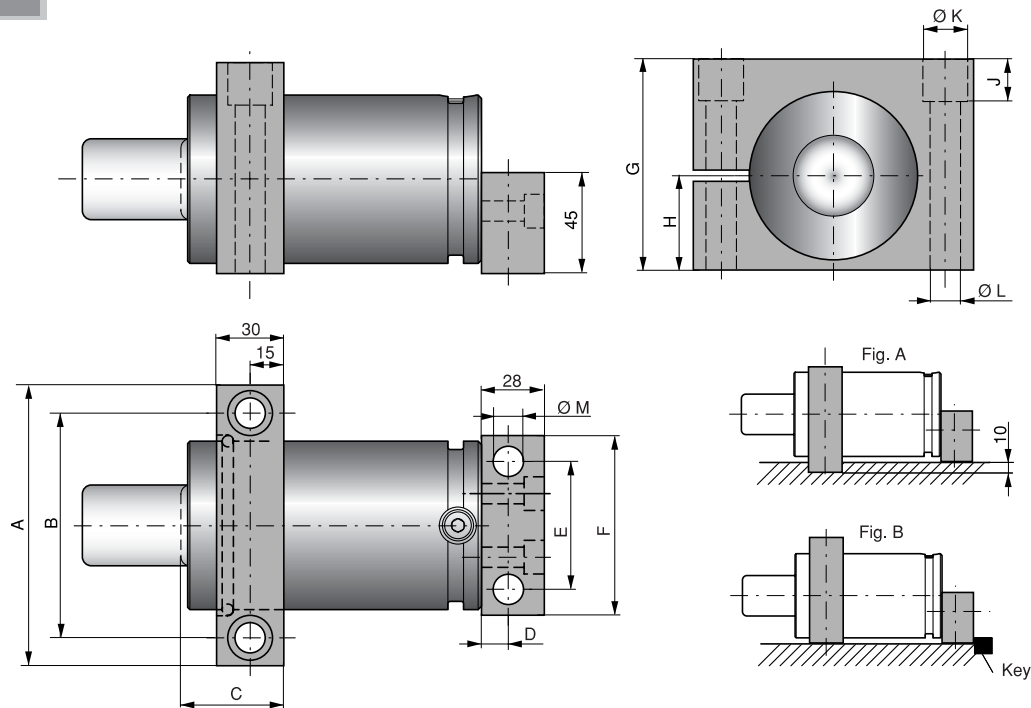
Order No.	C	ØD	E	Min No. per Spring
K-250	20	7	7	3
K-500	25	9	7	3
K-750	30	13.5	14	3
K-1500	30	13.5	14	3
K-3000	40	17.5	14	3
K-5000	50	17.5	14	3
K-7500	50	21.5	14	3
K-10000	58	21.5	15	3

**Note:** When ordering Lug K for TB springs, a lug of larger size than the spring must be used. For example, a TB 750 spring requires Lug K-1500.



Spring Size	Screw Size	Torque*		ØC
		lbF	Nm	
250	M6	7-13	10-17	56.6
500	M8	18-30	25-40	70.7
750	M12	63-100	85-136	80
X 1500	M12	63-100	85-136	92
1500 (TB 750)	M12	63-100	85-136	104
3000 (TB 1500)	M16	148-246	200-333	130
5000 (TB 3000)	M16	148-246	200-333	155
7500 (TB 5000)	M20	288-479	360-649	195
10 000	M20	288-479	360-649	240

\*Torque setting depends on the strength of screw used.

**HM**

HM (Horizontal Mount) is a mount for the TU/TC 750-3000 springs. This mount is according to FORD Standard WDX356020. The front support can be rotated 180° allowing it to be mounted in a 10 mm key-groove. If the front support is not mounted in a key-groove, we recommend that the rear mount is backed up using a key (see Fig. A and B).

The support is delivered complete with screws for mounting to the spring. Black oxide finish.

Order No.	A	B	C	D	E	F	G	H	J	Ø K	Ø L	Ø M
HM-750	90	68	43	13	44	65	70	30	25	18	11	11
HM-1500	125	100	45	12	57	80	94	42	19	20	13.5	13.5
HM-3000	140	115	48	15	70	95	115	52.5	40	20	13.5	13.5

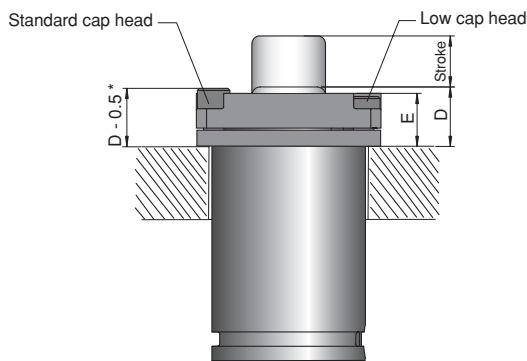
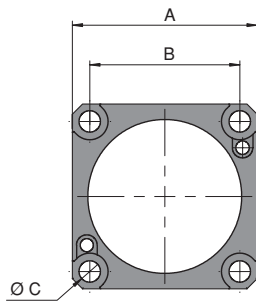
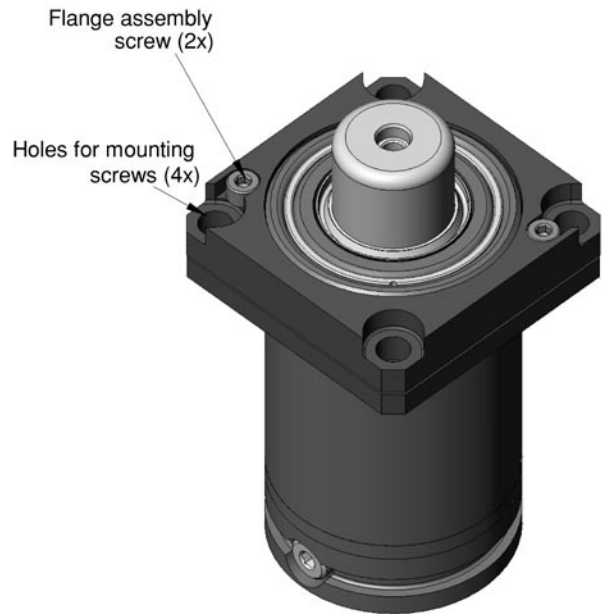
## FCSC

The FCSC Clamp Flange has a unique patented design that offers a very robust play-free connection between the gas spring and the mount. This play-free connection also eliminates rotation of the gas spring.

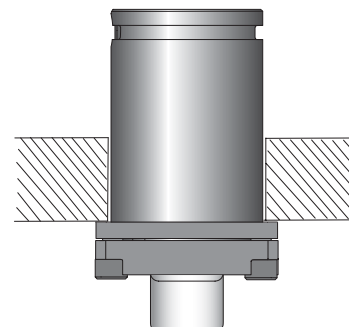
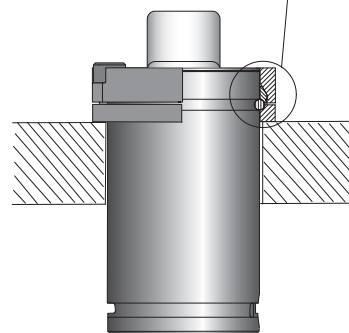
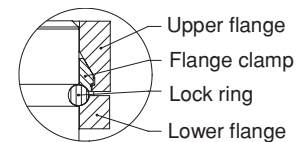
The FCSC Clamp Flange is especially suitable for gas springs that are to be hoses together and/or have high speed, long stroke upside-down installations.

The FCSC Clamp Flange is available for gas springs sizes from 750 up to 7500.

**Note:** The FCSC and FCS flanges are fully interchangeable if low cap head mounting screws (4x) are used. Using low cap head screws makes the top of the screw sit flush with the top of the flange. Using normal cap head screws causes the top of the screw to protrude from the top of the flange by 3 mm.



Low cap head screws are recommended  
\* If standard screws are used



Order No.	A	B	ØC	D	E
FCSC-750	70	56.5	9	24	19.5
FCSC-1500	90	73.5	10.5	29	26
FCSC-3000	110	92	12.5	33	30
FCSC-5000	130	109.5	12.5	36	32.5
FCSC-7500	162	138	16.5	41	38

Patent No. SE 521352, other patents pending