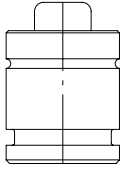
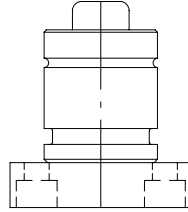


Overview - Automotive Standards

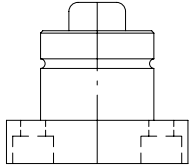
The Ford Motor Company has their own WDX3560 World Standard for gas springs, mounts and accessories supplied to Ford, based on the Kaller TU and LCF series.



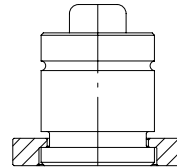
WDX356015-XX-XX-DMS⁽¹⁾, (TU 750-7500)
WDX356025-XX-XX-DMS⁽¹⁾, (LCF 750-7500)
¹= Self contained (S) only



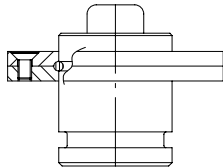
WDX356016-XX-XX-PM⁽¹⁾, (TU 750-7500 with MP plate)
¹= Self contained (S) or Piped system (P).
Note: Piped system (P) supplied with adapter 4017764.



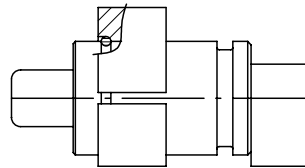
WDX3580-32-XX-XX-RM⁽¹⁾, (TU 750-7500 with square welded flange)
WDX3580-38-XX-XX-RM⁽¹⁾ (LCF 750-7500 with square welded flange)
¹= Self contained (S) or Piped system (P).
Note: Piped system (P) supplied with adapter 4017764.



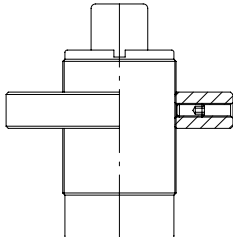
WDX356018-XX-XX-SLS¹, (TU 750-7500 with FFC³ flange)
¹= Self contained (S) only
³= 750 size requires special FFC flange.



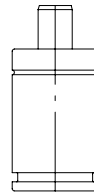
WDX3560019-XX-XX-TMS⁽¹⁾, (TU 750-7500 with FC⁴ flange)
¹= Self contained (S) only
⁴= 750 size requires special FC flange.



WDX3560020-XX-XX-HM⁽¹⁾, (TU 750-3000 with horizontal foot mount)
¹= Self contained (S) or Piped system (P).
Note: Piped system (P) supplied with adapter 4017764.

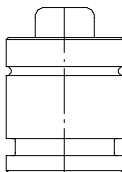


WDX3560021-07-XX-TB, (KM 750 with FTM 750 mount)

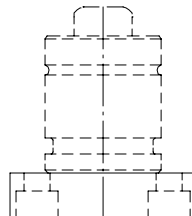


WDX3560022-03-XX-DMS, (TU 250)

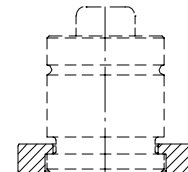
General Motors has their own 90.25 Global Die Standard for gas springs, mounts and accessories supplied to GM, based on the Kaller TU series.



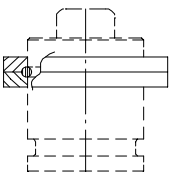
90.25.00-XX-XX, (TU 750-7500)



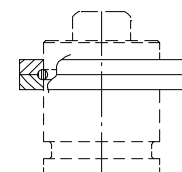
90.25.04-XX, (Mount only, MP plate 750-7500)



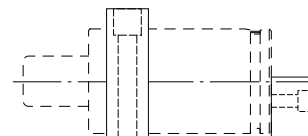
90.25.01-XX, (Mount only, FFC-flange 750-7500)



90.25.02-XX,
(Mount only, FCS-flange 750-7500)












90.25.03-XX,
(Mount only, FC-flange mount)



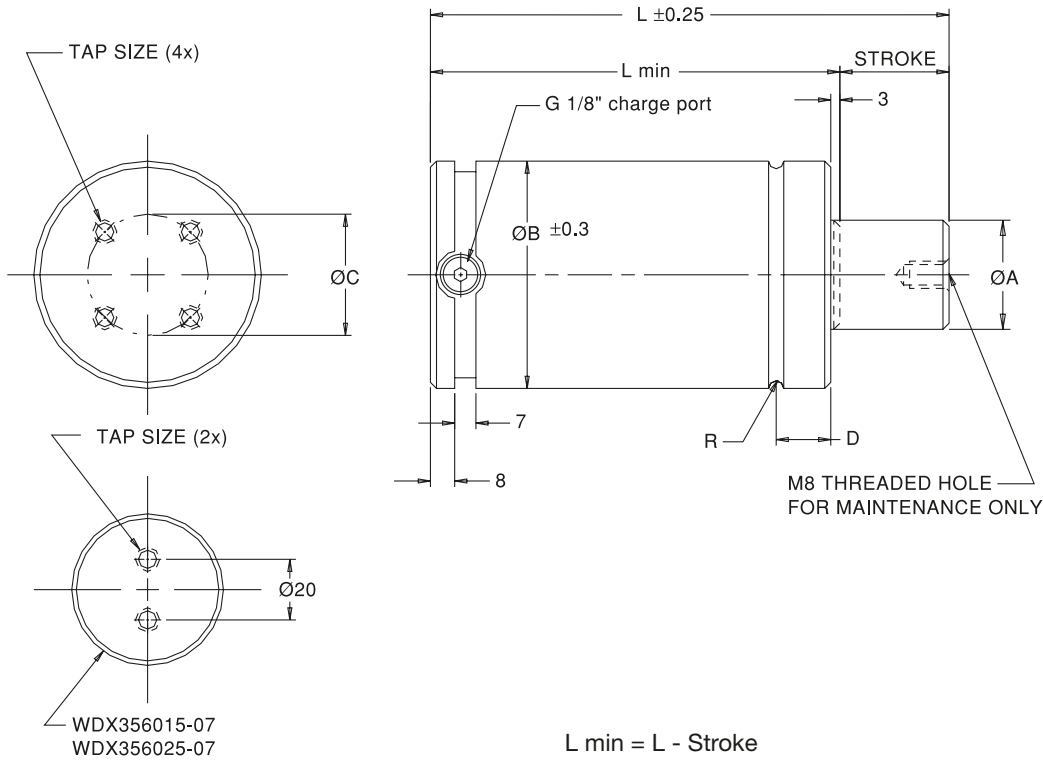
90.25.06-XX, (Mount only, Horizontal foot mount 750-3000)



Automotive Standards

FORD WDX356015-XX-XX-DMS FORD WDX356025-XX-XX-DMS		Page 2.11/2
FORD WDX356016-XX-XX-PM ⁽¹⁾		Page 2.11/3
FORD WDX3580-32-XX-XX-RM ⁽¹⁾ FORD WDX3580-38-XX-XX-RM ⁽¹⁾		Page 2.11/4
FORD WDX356018-XX-XX-SLS		Page 2.11/5
FORD WDX356019-XX-XX-TMS		Page 2.11/6
FORD WDX356020-XX-XX-HM ⁽¹⁾		Page 2.11/7
FORD WDX356021-07-XX-TB		Page 2.11/8
FORD WDX356022-03-XX-DMS		Page 2.11/8
FORD Adapter 9106252-F		Page 2.11/9
FORD RM		Page 2.11/9
FORD FC-750		Page 2.11/10
FORD FFC-750		Page 2.11/10
GM 90.25.00-XX-XX (Global)		Page 2.11/11
GM 90.25.04-XX (Global)		Page 2.11/12
GM 90.25.01-XX (Global)		Page 2.11/13
GM 90.25.02-XX (Global)		Page 2.11/14
GM 90.25.03-XX (Global)		Page 2.11/15
GM 90.25.06-XX (Global)		Page 2.11/16

FORD WDX356015-XX-XX-DMS
FORD WDX356025-XX-XX-DMS

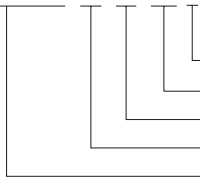


FORD Part No. = Order No.	Gas spring	L	ØA	ØB	C	D	R	Tap size
WDX356015-07-XX-DMS	TU 750	95 + 2x stroke	25	50	20	14.5	2.0	M8 x 13 deep
WDX356015-15-XX-DMS	TU 1500	110 + 2x stroke	36	75	40	18.0	2.5	M8 x 13 deep
WDX356015-30-XX-DMS	TU 3000	120 + 2x stroke	50	95	60	21.0	2.5	M8 x 13 deep
WDX356015-50-XX-DMS	TU 5000	140 + 2x stroke	65	120	80	22.5	2.5	M10 x 16 deep
WDX356015-75-XX-DMS	TU 7500	155 + 2x stroke	80	150	100	24.5	2.5	M10 x 16 deep

FORD Part No. = Order No.	Gas spring	L	ØA	ØB	C	D	R	Tap size
WDX356025-07-XX-DMS	LCF 750	95 + 2x stroke	25	50	20	14.5	2.0	M8 x 13 deep
WDX356025-15-XX-DMS	LCF 1500	110 + 2x stroke	36	75	40	18.0	2.5	M8 x 13 deep
WDX356025-30-XX-DMS	LCF 3000	120 + 2x stroke	50	95	60	21.0	2.5	M8 x 13 deep
WDX356025-50-XX-DMS	LCF 5000	140 + 2x stroke	65	120	80	22.5	2.5	M10 x 16 deep
WDX356025-75-XX-DMS	LCF 7500	155 + 2x stroke	80	150	100	24.5	2.5	M10 x 16 deep

ORDERING EXAMPLE

WDX356015 07 05 DM S

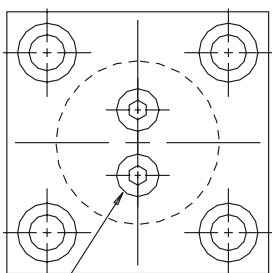
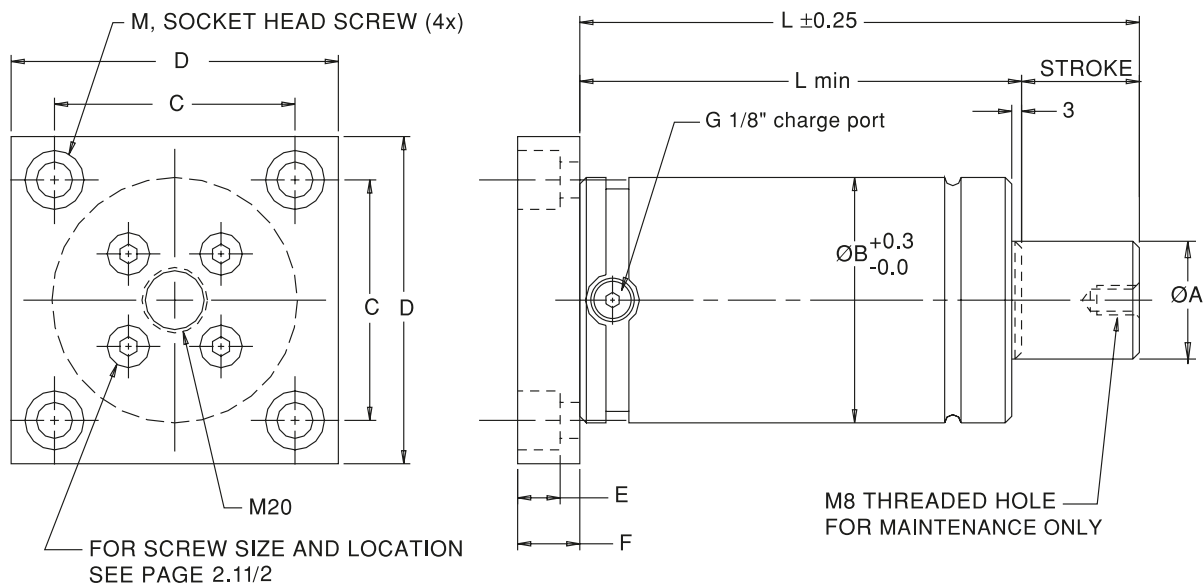


SELF CONTAINED CODE (S)
 TYPE OF MOUNTING CODE
 CYLINDER STROKE CODE
 CYLINDER SIZE CODE
 FORD BASIC PART NUMBER

XX = Stroke	FORD Code
25	02
38.1	03
50	05
63.5	06
80	08
100	10
125	12
160	16
200	20



KALLER® FORD WDX356016-XX-XX-PM⁽¹⁾



NOTE: FOR PIPED SYSTEM (P) ADAPTER 9106252-F IS SUPPLIED WITH GAS SPRING, SEE PAGE 2.11/9

WDX356016-07-XX-PM ONLY
TWO SCREWS, SEE PAGE 2.11/2

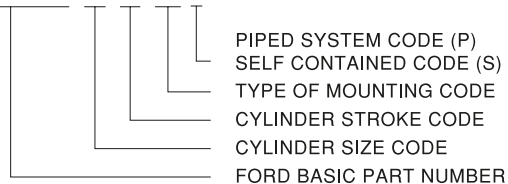
$L \text{ min} = L - \text{Stroke}$

FORD Part No. = Order No.	Gas spring	Spring mount	L	ØA	ØB	C	D	E	F	M
WDX356016-07-XX-PM ⁽¹⁾	TU 750	MP-750	95 + 2x stroke	25	50	56.5	80	12	20	M10
WDX356016-15-XX-PM ⁽¹⁾	TU 1500	MP-1500	110 + 2x stroke	36	75	73.5	100	12	20	M10
WDX356016-30-XX-PM ⁽¹⁾	TU 3000	MP-3000	120 + 2x stroke	50	95	92.0	120	13	20	M12
WDX356016-50-XX-PM ⁽¹⁾	TU 5000	MP-5000	140 + 2x stroke	65	120	109.5	140	13	20	M12
WDX356016-75-XX-PM ⁽¹⁾	TU 7500	MP-7500	155 + 2x stroke	80	150	138.0	190	17	25	M16

- ¹ S = Self contained
P = Piped system supplied with adapter 9106252-F mounted in the G1/8" charge port before delivery.
Note: Remember to remove the valve from the spring when using an adapter.

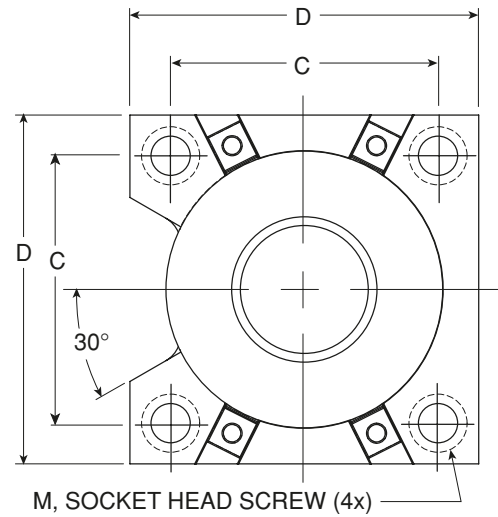
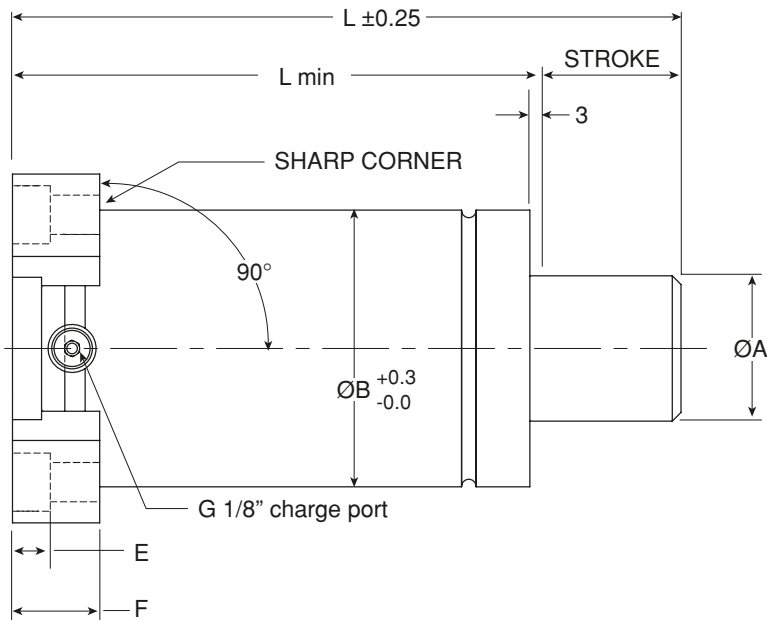
ORDERING EXAMPLE

WDX356016 07 05 PM S



XX = Stroke	FORD Code
25	02
38.1	03
50	05
63.5	06
80	08
100	10
125	12
160	16
200	20

FORD WDX3580-32-XX-XX-RM⁽¹⁾
FORD WDX3580-38-XX-XX-RM⁽¹⁾



NOTE: FOR PIPED SYSTEM (P) ADAPTER 9106252-F IS SUPPLIED WITH GAS SPRING, SEE PAGE 2.11/9.

$L \text{ min} = L - \text{Stroke}$

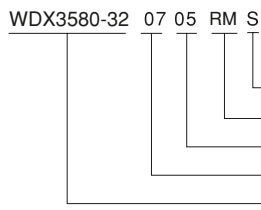
FORD Part No. = Order No.	Gas spring	Spring mount	L	ØA	ØB	C	D	E	F	M
WDX3580-32-07-XX-RM ⁽¹⁾	TU 750	RM-750	105 + 2x stroke	25	50	56.5	80	11	30	M10
WDX3580-32-15-XX-RM ⁽¹⁾	TU 1500	RM-1500	120 + 2x stroke	36	75	73.5	100	11	30	M10
WDX3580-32-30-XX-RM ⁽¹⁾	TU 3000	RM-3000	130 + 2x stroke	50	95	92.0	120	13	30	M12
WDX3580-32-50-XX-RM ⁽¹⁾	TU 5000	RM-5000	150 + 2x stroke	65	120	109.5	140	13	30	M12
WDX3580-32-75-XX-RM ⁽¹⁾	TU 7500	RM-7500	165 + 2x stroke	80	150	138.0	190	17	30	M16

FORD Part No. = Order No.	Gas spring	Spring mount	L	ØA	ØB	C	D	E	F	M
WDX3580-38-07-XX-RM ⁽¹⁾	LCF 750	RM-750	105 + 2x stroke	25	50	56.5	80	11	30	M10
WDX3580-38-15-XX-RM ⁽¹⁾	LCF 1500	RM-1500	120 + 2x stroke	36	75	73.5	100	11	30	M10
WDX3580-38-30-XX-RM ⁽¹⁾	LCF 3000	RM-3000	130 + 2x stroke	50	95	92.0	120	13	30	M12
WDX3580-38-50-XX-RM ⁽¹⁾	LCF 5000	RM-5000	150 + 2x stroke	65	120	109.5	140	13	30	M12
WDX3580-38-75-XX-RM ⁽¹⁾	LCF 7500	RM-7500	165 + 2x stroke	80	150	138.0	190	17	30	M16

- ¹ S = Self contained
- P = Piped system supplied with adapter 9106252-F mounted in the G1/8" charge port before delivery.

Note: Remember to remove valve from the spring when using an adapter.

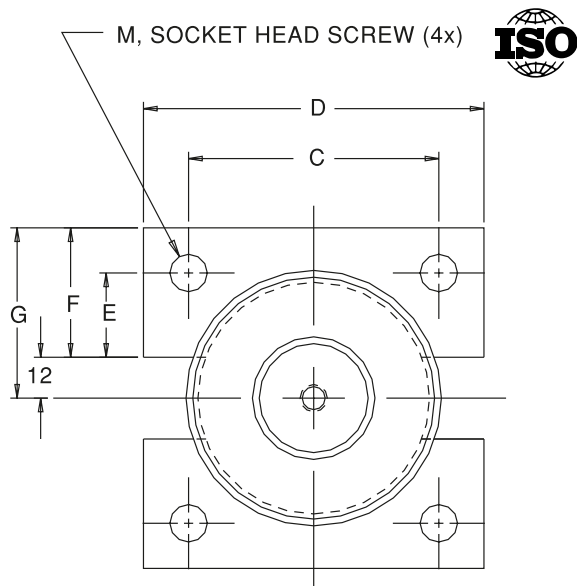
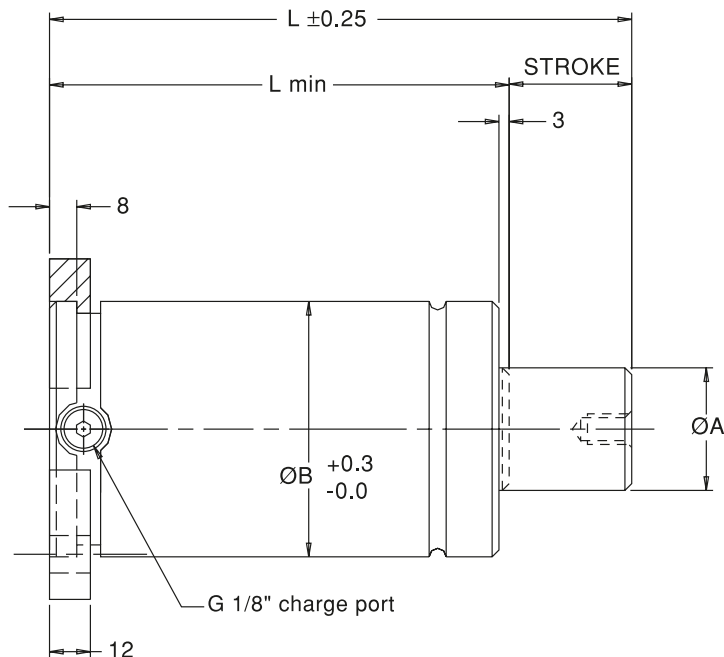
ORDERING EXAMPLE



PIPED SYSTEM CODE (P)
 SELF CONTAINED CODE (S)
 TYPE OF MOUNTING CODE
 CYLINDER STROKE CODE
 CYLINDER SIZE CODE
 FORD BASIC PART NUMBER

XX = Stroke	FORD Code
25	02
38.1	03
50	05
63.5	06
80	08
100	10
125	12
160	16
200	20



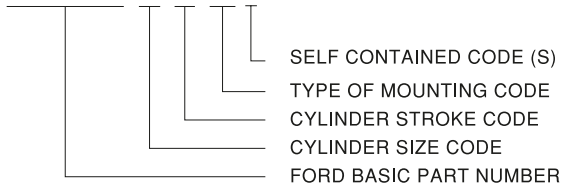
KALLER®**FORD WDX356018-XX-XX-SLS**

$$L \text{ min} = L - \text{Stroke}$$

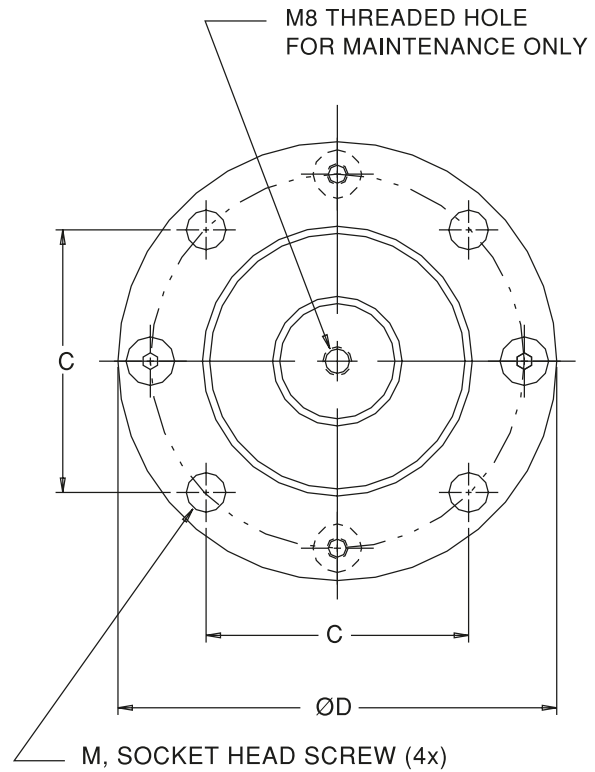
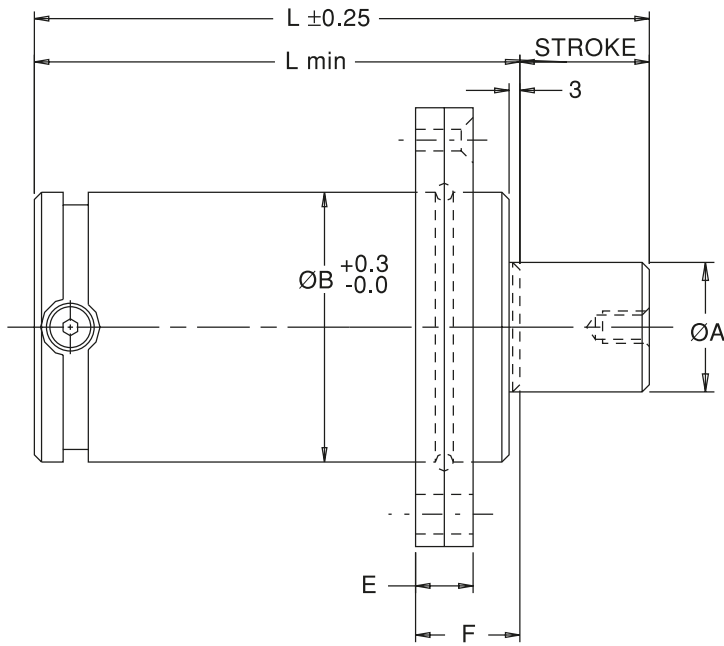
FORD Part No. = Order No.	Gas spring	Spring mount	L	ØA	ØB	C	D	E	F	G	M
WDX356018-07-XX-SLS	TU 750	Ford FFC-750	95 + 2x stroke	25	50	56.5	80	16.25	28	40	M8
WDX356018-15-XX-SLS	TU 1500	FFC-1500	110 + 2x stroke	36	75	73.5	100	24.75	38	50	M10
WDX356018-30-XX-SLS	TU 3000	FFC-3000	120 + 2x stroke	50	95	92.0	120	34.00	48	60	M12
WDX356018-50-XX-SLS	TU 5000	FFC-5000	140 + 2x stroke	65	120	109.5	140	42.75	58	70	M12
WDX356018-75-XX-SLS	TU 7500	FFC-7500	155 + 2x stroke	80	150	138.0	190	57.00	83	95	M16

ORDERING EXAMPLE

WDX356018 07 05 SL S



XX = Stroke	FORD Code
25	02
38.1	03
50	05
63.5	06
80	08
100	10
125	12
160	16
200	20



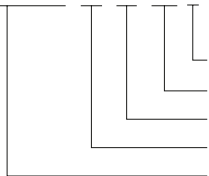
$L \text{ min} = L - \text{Stroke}$

FORD Part No. = Order No.	Gas spring	Spring mount	L	ØA	ØB	C	D	E	F	M
WDX356019-07-XX-TMS	TU 750	Ford FC-750 ⁽¹⁾	95 + 2x stroke	25	50	56.5	95	13	24	M10
WDX356019-15-XX-TMS	TU 1500	FC-1500	110 + 2x stroke	36	75	73.5	122	16	29	M10
WDX356019-30-XX-TMS	TU 3000	FC-3000	120 + 2x stroke	50	95	92.0	150	18	33	M12
WDX356019-50-XX-TMS	TU 5000	FC-5000	140 + 2x stroke	65	120	109.5	175	21	36	M12
WDX356019-75-XX-TMS	TU 7500	FC-7500	155 + 2x stroke	80	150	138.0	220	26	41	M16

• ¹ FC flange does not comply with Kaller/ISO standard. Mounting bolt size M10 instead of M8 (see page 2.5/5).

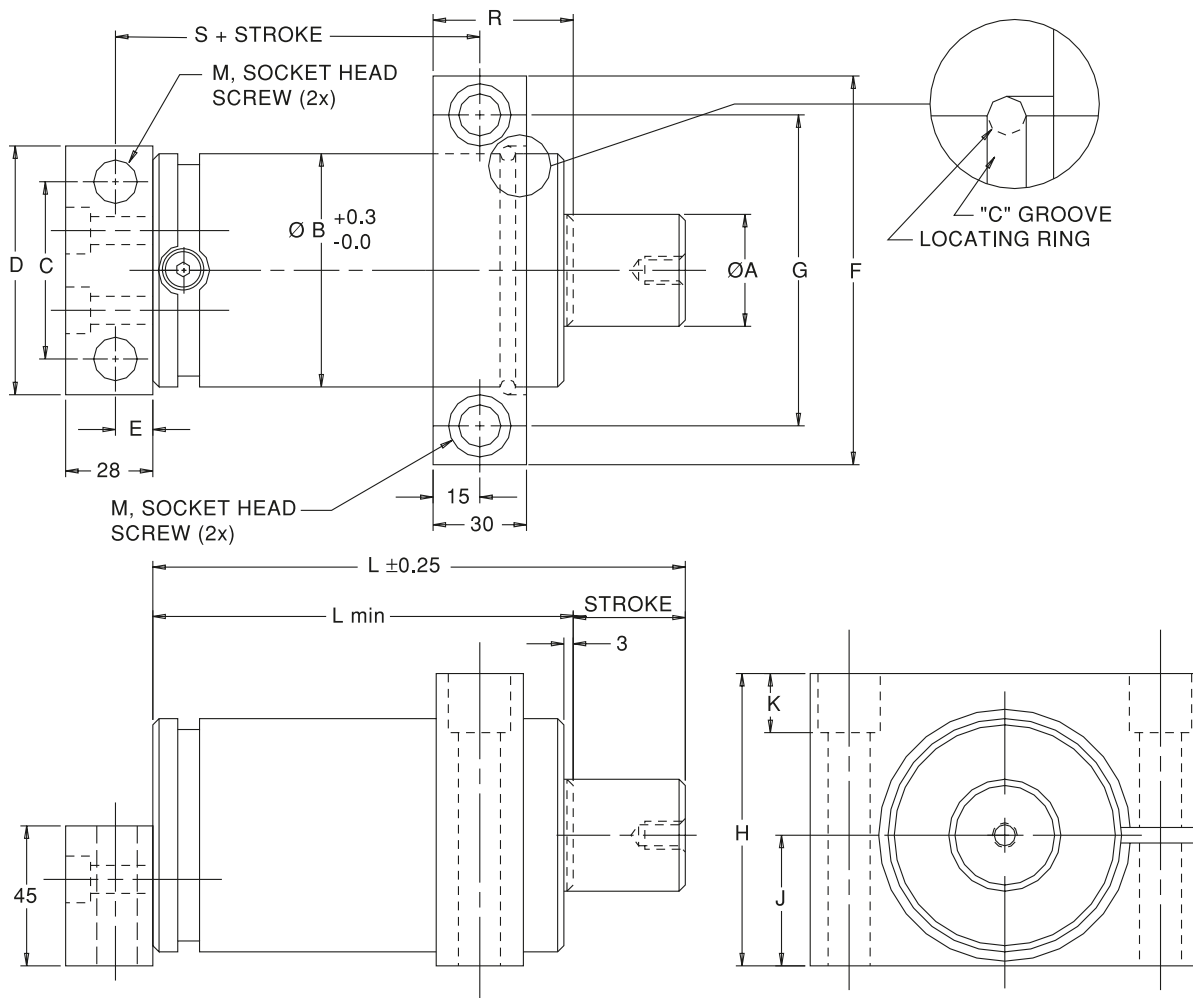
ORDERING EXAMPLE

WDX356019 07 05 TM S



SELF CONTAINED CODE (S)
 TYPE OF MOUNTING CODE
 CYLINDER STROKE CODE
 CYLINDER SIZE CODE
 FORD BASIC PART NUMBER

XX = Stroke	FORD Code
25	02
38.1	03
50	05
63.5	06
80	08
100	10
125	12
160	16
200	20



NOTE: FOR PIPED SYSTEM (P) ADAPTER 9106252-F IS SUPPLIED WITH GAS SPRING, SEE PAGE 2.11/9

L min = L - Stroke

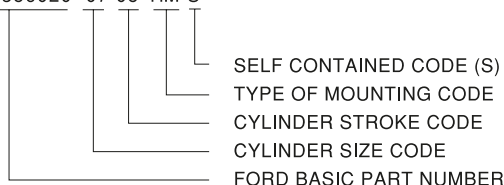
FORD Part No. = Order No.	Gas spring	Spring mount	L	ØA	ØB	C	D	E	F	G	H	J	K	M	R	S
WDX356020-07-XX-HM ⁽¹⁾	TU 750	HM-750	95 + 2x stroke	25	50	44	65	13	90	68	70	30	25	M10	43	80
WDX356020-15-XX-HM ⁽¹⁾	TU 1500	HM-1500	110 + 2x stroke	36	75	57	80	12	125	100	94	42	19	M12	45	92
WDX356020-30-XX-HM ⁽¹⁾	TU 3000	HM-3000	120 + 2x stroke	50	95	70	95	15	140	115	115	52.5	40	M12	48	102

• ¹S = Self contained

P = Piped system supplied with adapter 9106252-F mounted in the G1/8" charge port before delivery.
 Note: Remember to remove the valve from the spring.

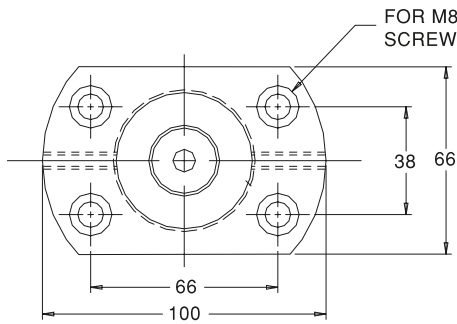
ORDERING EXAMPLE

WDX356020 07 05 HM S



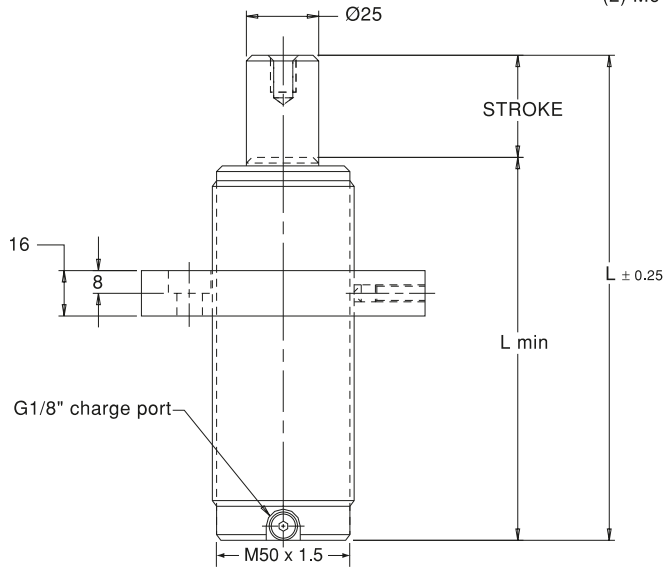
XX = Stroke	FORD Code
25	02
38.1	03
50	05
63.5	06
80	08
100	10
125	12
160	16
200	20

FORD WDX356021-07-XX-TB



THREADED GAS SPRING ASSEMBLY CONSISTS OF

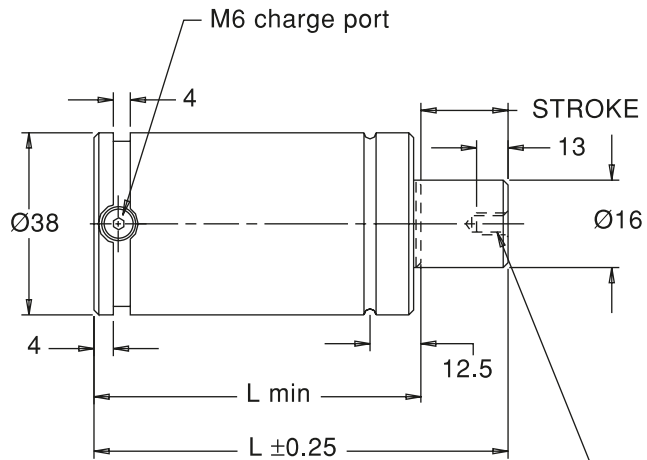
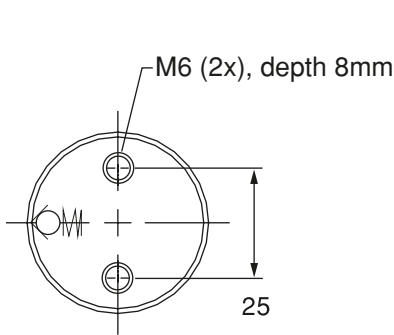
- (1) GAS SPRING
- (1) THEADED FLANGE MOUNT
- (2) M6 SET SCREWS



$L_{min} = L - \text{Stroke}$

Ford Part No.	Stroke	FORD Code	L min
WDX356021-07-02-TB	25	02	75
WDX356021-07-03-TB	38.1	03	88
WDX356021-07-05-TB	50	05	100
WDX356021-07-06-TB	63.5	06	113
WDX356021-07-08-TB	80	08	130
WDX356021-07-10-TB	100	10	150
WDX356021-07-12-TB	125	12	175

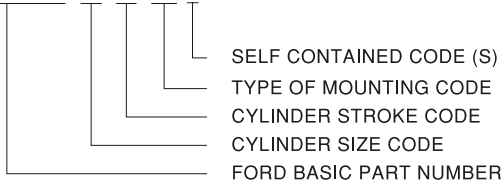
FORD WDX356022-03-XX-DMS



M6 THREADED HOLE FOR MAINTENANCE ONLY

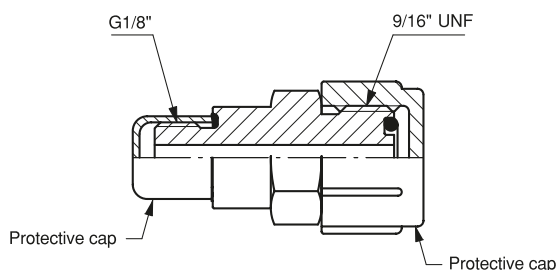
ORDERING EXAMPLE

WDX356022 03 05 DM S



Ford Part No.	Stroke	L min
WDX356022-03-05-DMS	50	100
WDX356022-03-06-DMS	63.5	113.5



FORD O-ring face seal adapter 9106252-F

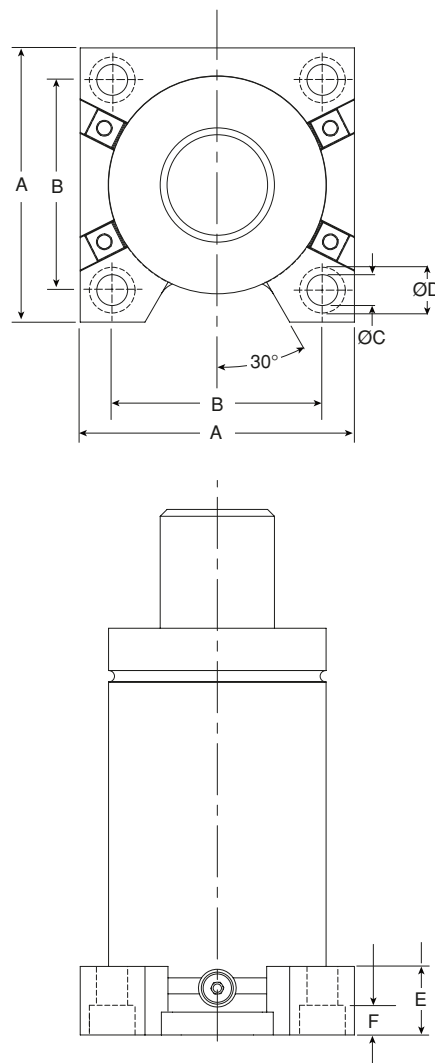
- Adapter for hose connection G1/8" - 9/16" UNF, to be delivered mounted on springs with piped system code (P).

RM

The RM is a modular mount for the TU/TC 750-7500 springs. This mount is according to FORD Standard WDX3580. Black oxide finish.

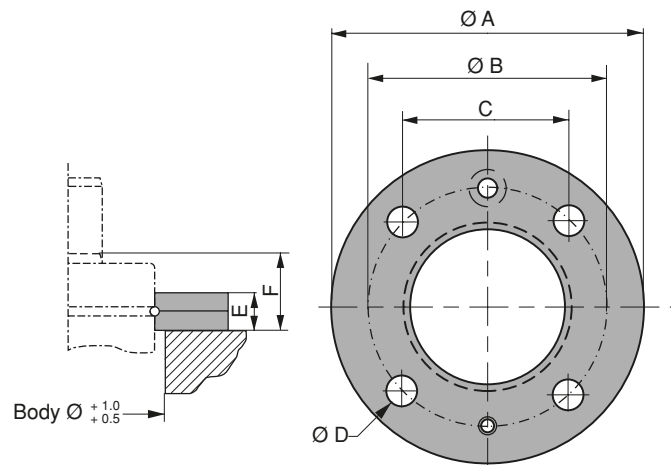
For more information about this mount contact your distributor.

Size	A	B	Ø C	Ø D	E	F
RM-750	80	56.5	11	18	30	11
RM-1500	100	73.5	11	18	30	11
RM-3000	120	92	13.5	20	30	13
RM-5000	140	109.5	13.5	20	30	13
RM-7500	190	138	17.5	26	30	17



FORD FC-750

This is the Ford version of the standard FC-750, according to FORD standard WDX356019 (see also page 2.11/6).

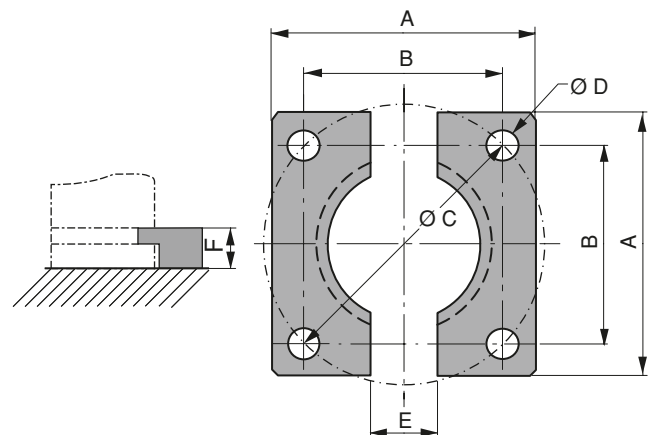


Order No.	$\varnothing A$	$\varnothing B$	C	$\varnothing D$	E	F
FORD FC-750	95	80	56.5	11	13	24

FORD FFC-750



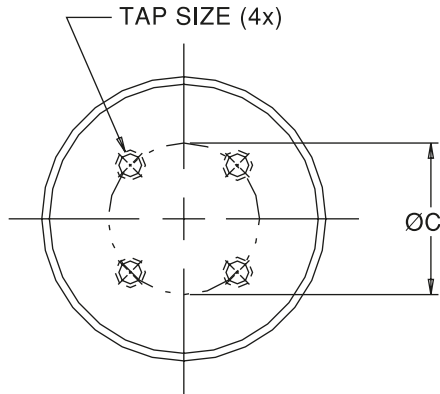
This is the Ford version of the standard FFC-750, according to FORD standard WDX356018.



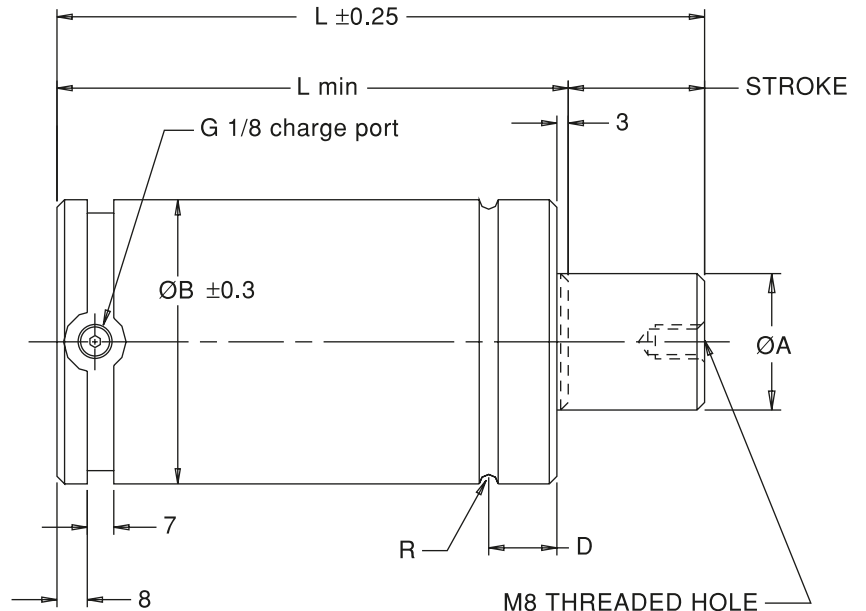
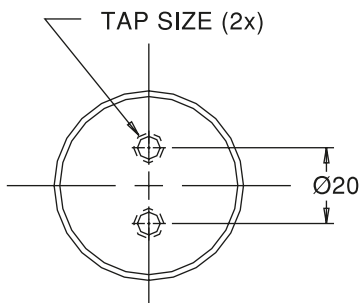
Order No.	A	B	$\varnothing C$	$\varnothing D$	E	F
FORD FFC-750	75	56.5	80	9	24	12



1500 to 7500 mounts



750 mount only



M8 THREADED HOLE FOR MAINTENANCE ONLY

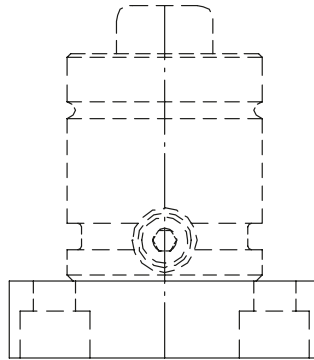
$L \text{ min} = L - \text{Stroke}$

GM Part No.	Gas spring	L	ØA	ØB	C	D	R	Tap size
90.25.00-07-XX	TU 750	95 + 2x stroke	25	50	20	14.5	2.0	M8 x 13 deep
90.25.00-15-XX	TU 1500	110 + 2x stroke	36	75	40	18.0	2.5	M8 x 13 deep
90.25.00-30-XX	TU 3000	120 + 2x stroke	50	95	60	21.0	2.5	M8 x 13 deep
90.25.00-50-XX	TU 5000	140 + 2x stroke	65	120	80	22.5	2.5	M10 x 16 deep
90.25.00-75-XX	TU 7500	155 + 2x stroke	80	150	100	24.5	2.5	M10 x 16 deep

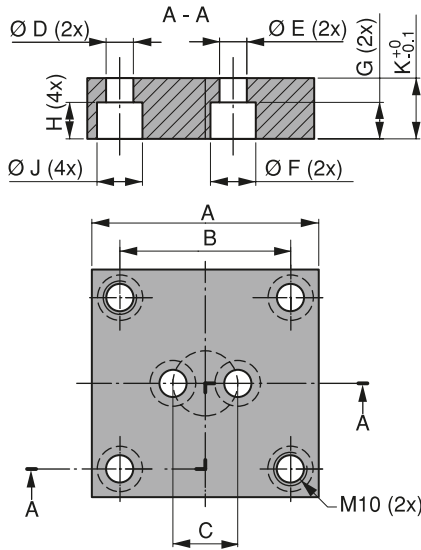
- ISO specification 11901-1

XX = Stroke	GM Code
25	02
50	05
80	08
100	10
125	12
160	16
200	20

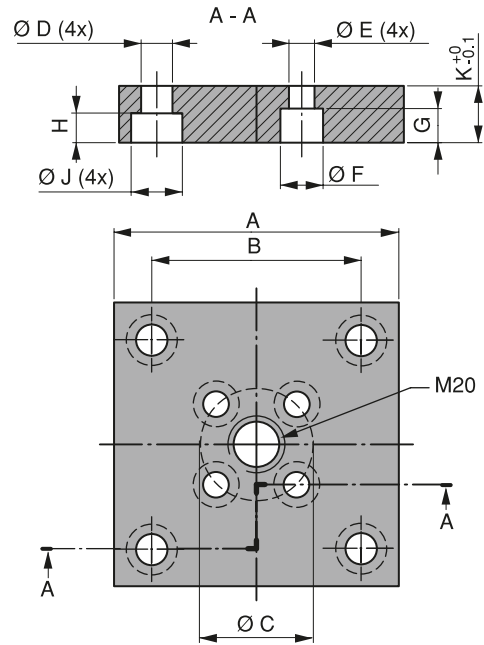
* = According to updated ISO 11901 standard



750 mount only

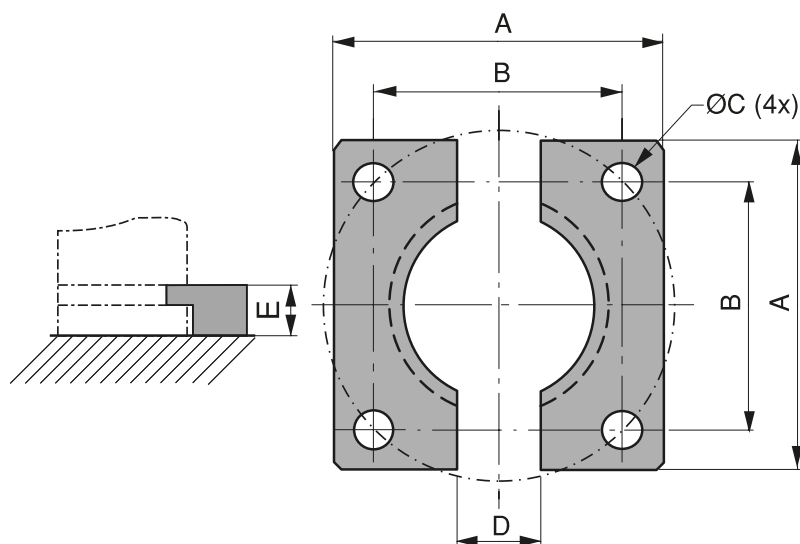
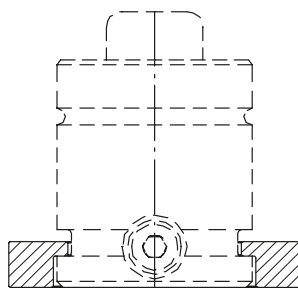


1500 to 7500 mounts



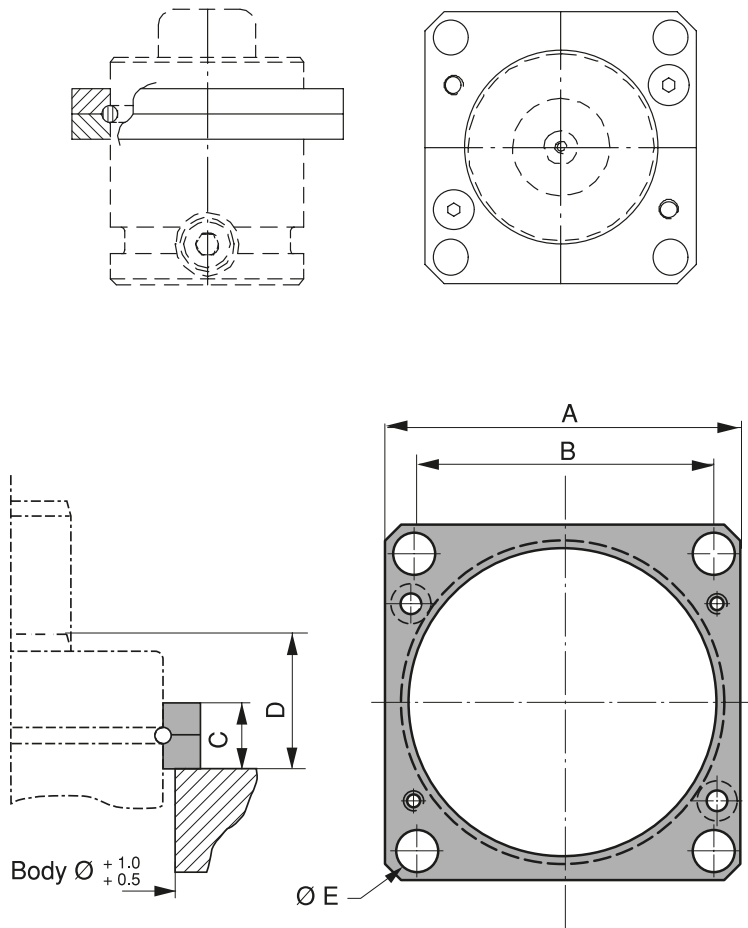
GM Part No.	Spring Mount = Order No.	A	B	C	D	E	F	G	H	J	K
90.25.04-7.5	MP 750	75	56.5	20	9	9	15	14	14	15	20
90.25.04-15	MP 1500	100	73.5	40	11	9	15	14	12	18	20
90.25.04-30	MP 3000	120	92	60	13.5	9	15	14	13	20	20
90.25.04-50	MP 5000	140	109.5	80	13.5	11	18	15	13	20	20
90.25.04-75	MP 7500	190	138	100	17.5	11	18	15	17	26	25

- ISO specification 11901-2
- The above stated GM part no. does not include gas spring



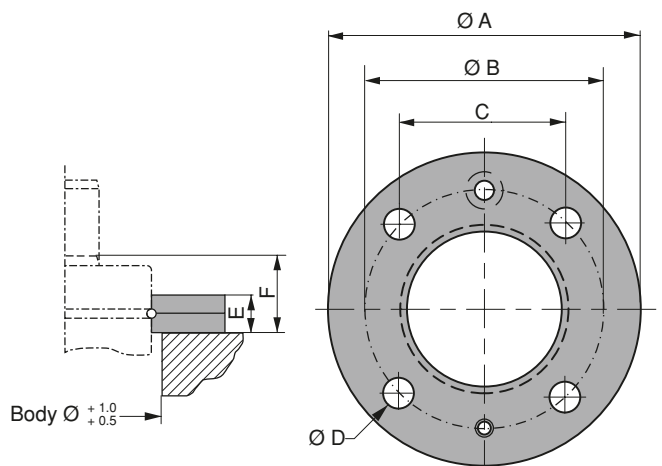
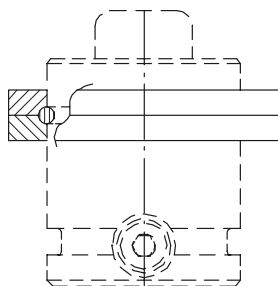
GM Part No.	Spring Mount = Order No.	A	B	Ø C	D	E
90.25.01-7.5	FFC 750	75	56.5	9	24	12
90.25.01-15	FFC 1500	100	73.5	11	24	12
90.25.01-30	FFC 3000	120	92	13.5	24	12
90.25.01-50	FFC 5000	140	109.5	13.5	24	12
90.25.01-75	FFC 7500	190	138	17.5	24	12

- ISO specification 11901-2
- The above stated GM part no. does not include gas spring



GM Part No.	Spring Mount = Order No.	A	B	C	D	Ø E
90.25.02-7.5	FCS 750	70	56.5	13	24	9
90.25.02-15	FCS 1500	90	73.5	16	29	11
90.25.02-30	FCS 3000	110	92	18	33	13.5
90.25.02-50	FCS 5000	130	109.5	21	36	13.5
90.25.02-75	FCS 7500	162	138	27	41	17.5

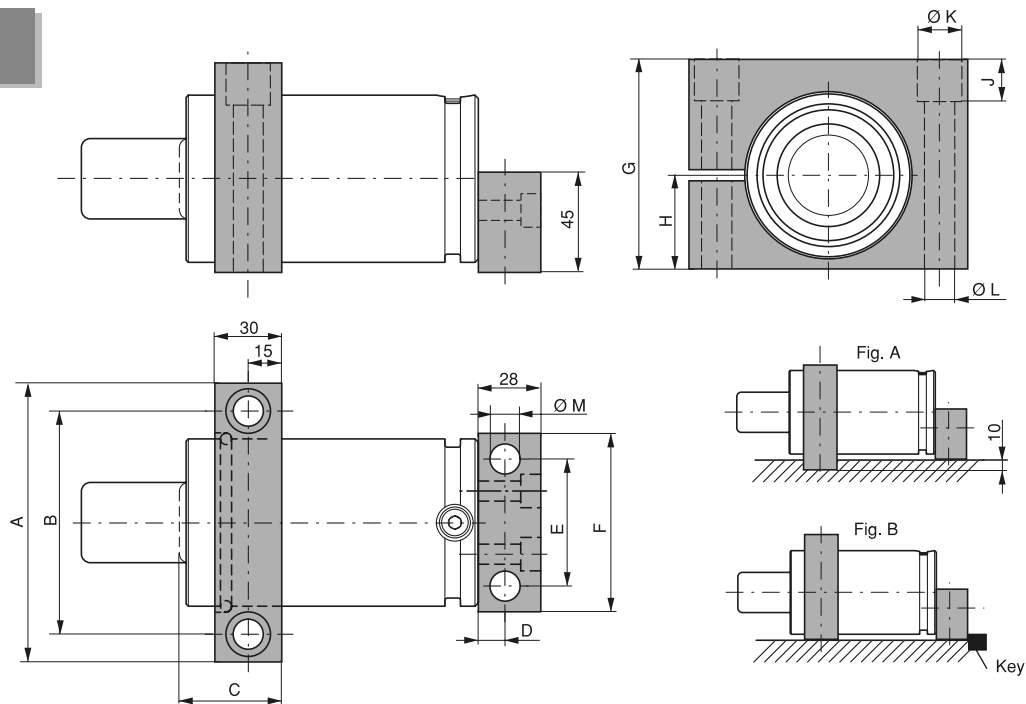
- ISO specification 11901-2
- The above stated GM part no. does not include gas spring



GM Part No.	Spring Mount = Order No.	A	B	C	D	Ø E	F
90.25.03-7.5	FC 750	95	80	56.5	9	13	24
90.25.03-15	FC 1500	122	104	73.5	11	16	29
90.25.03-30	FC 3000	150	130	92.0	13.5	18	33
90.25.03-50	FC 5000	175	155	109.5	13.5	21	36
90.25.03-75	FC 7500	220	195	138	17.5	27	41

- ISO specification 11901-2
- The above stated GM part no. does not include gas spring

HM



$$L \text{ min} = L - \text{Stroke}$$

GM Part No.	Spring mount = Order No	L	A	B	C	D	E	F	G	H	J	ØK	ØL	ØM
90.25.06-7.5	HM-750	95 + 2x stroke	90	68	43	13	44	65	70	30	25	18	11	11
90.25.06-15	HM-1500	110 + 2x stroke	125	100	45	12	57	80	94	42	19	20	13.5	13.5
90.25.06-30	HM-3000	120 + 2x stroke	140	115	48	15	70	95	115	52.5	40	20	13.5	13.5

- The above stated GM part no. does not include gas spring.
- The above stated GM part no. corresponds to the complete horizontal foot mount which includes front and rear mount, locking ring and mounting screws for gas spring.
- The front support can be rotated 180° allowing it to be mounted in a 10 mm key-groove. If the front support is not mounted in a key-groove, we recommend that the rear mount is backed up using a key (see Fig. A and Fig. B).