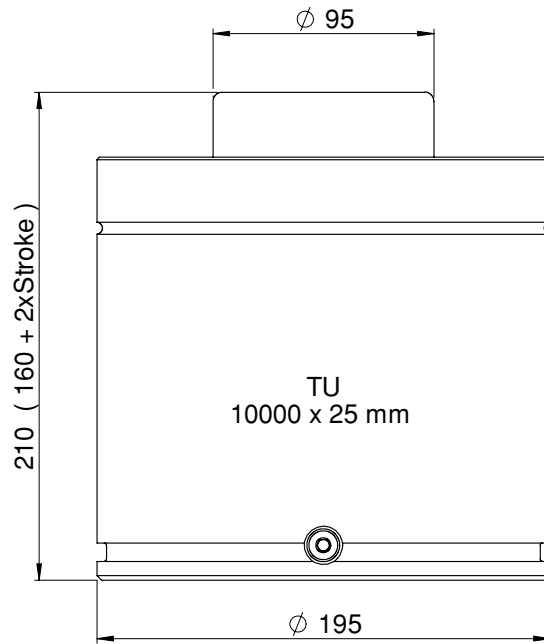


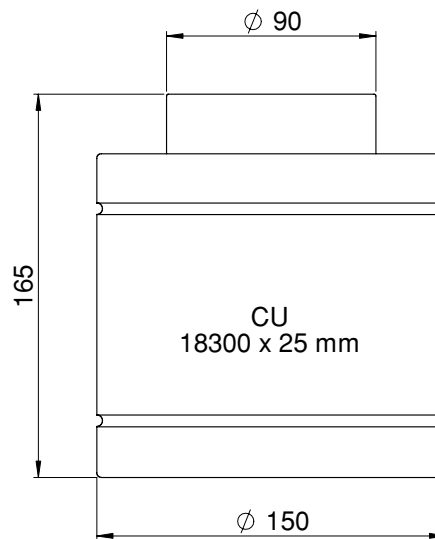
Overview - $F_{INIT} > 10000$



Initial Force
10000 daN
22480 lbF



Initial Force
11800 daN
26526 lbF



Initial Force
18300 daN
41138 lbF

$F_{INIT} \geq 10000$

CU 11800 - 18300

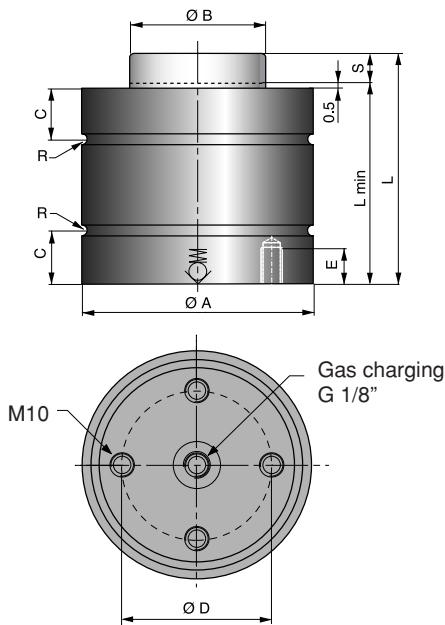


Page 2.10/2

TU 10000



Page 2.10/4



The CU gas spring is a very compact bore sealed gas spring, that gives a high force in a limited space. The max. frequency for the spring is 100 strokes/minute.

Springs with stroke lengths over 25 mm should always be attached to the tool, using a flange or the tapped holes in the bottom of the spring. We also recommend shorter stroke springs to be fastened for optimal service-life.

As an option, the CU springs can be delivered with a side-port plate for applications where a side port is needed, i.e. for use in hose systems.

Millimeters to Inches: mm ÷ 25.4 = inches

Kilograms to Pounds: Kg ÷ 0.45 = pounds

**Pounds Force to DecaNewtons:
LbF x 0.4448 = decaNewtons**

Order No.	S Stroke	Pounds Force (lbF) at 2175 psi		L ± 0.25	L min	Ø A ± 0.1	Ø B	C	Ø D	E	R	Gas vol. (l)	Weight (kg)
		Initial	End force**										
CU 11800-010	10		34800	100	90							0.33	5.4
CU 11800-016	16		35500	126	110							0.50	6.0
CU 11800-025	25	26530	38200	155	130							0.68	6.9
CU 11800-032	32*		36900	187	155	120.2	70	22.5	68	11	2.5	0.88	7.8
CU 11800-040	40*		37100	220	180							1.00	8.7
CU 11800-050	50*		37300	260	210							1.35	9.9
CU 18300-010	10		52800	110	100							0.56	9.5
CU 18300-016	16		56600	136	120							0.84	10.4
CU 18300-025	25	41140	57100	165	140							1.13	11.8
CU 18300-032	32*		56400	197	165	150.2	90	24.5	90	11	2.5	1.45	13.3
CU 18300-040	40*		56200	235	195							1.86	15.0
CU 18300-050	50*		57300	270	220							2.19	16.5

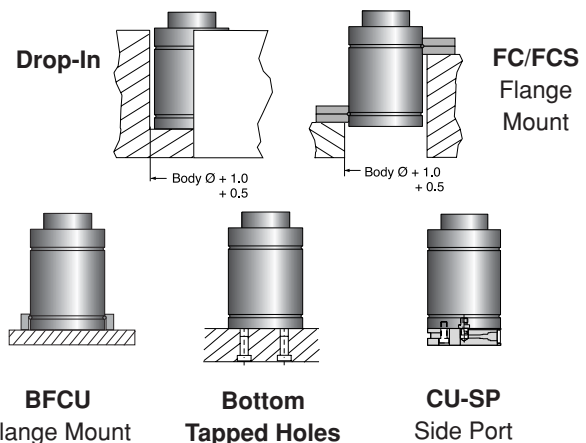
* = Should always be attached to the tool using the tapped holes in the bottom or a flange

** = at full stroke

BASIC INFORMATION

Pressure medium Nitrogen
 Max. charging pressure 150 bar/2175 psi
 Min. charging pressure 25 bar/360 psi
 Operating temperature 0 - 80°C/0 - 176°F
 Force increase by temperature..... ±0.3%/°C
 Recommended max strokes/min ~80-100
 Max piston rod velocity 0.8 m/s
 Rod surface Black Nitride
 Tube surface..... Black Nitride
 Repair kit CU 11800
 Repair kit CU 18300

MOUNTING POSSIBILITIES



FC

For model	Order No.	Ø a	Ø b	c	Ø d	e	f
CU 11800	FC-5000	175	155	109.5	13.5	21	33
CU 18300	FC-7500	220	195	138	17.5	27	38

Body $\varnothing \begin{smallmatrix} +1.0 \\ +0.5 \end{smallmatrix}$

FCS

For model	Order No.	Ø a	b	c	Ø d	e	f
CU 11800	FCS-5000	155	130	109.5	13.5	21	33
CU 18300	FCS-7500	195	162	138	17.5	27	38

Body $\varnothing \begin{smallmatrix} +1.0 \\ +0.5 \end{smallmatrix}$

BFCU

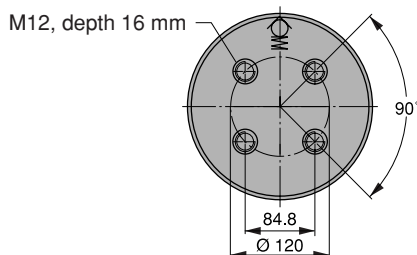
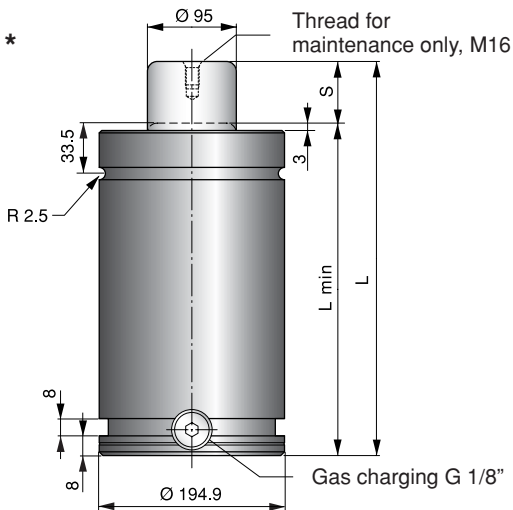
For model	Order No.	a	b	Ø c	d
CU 11800	BFCU-11800	130	109.5	13	29.5
CU 18300	BFCU-18300	162	138	17.5	34.5

CU-SP 11800

For model	Order No.	For U-groove mounts on CU-SP
CU 11800	CU-SP 11800	Refer to TU 5000

CU-SP 18300

For model	Order No.	For U-groove mounts on CU-SP
CU 18300	CU-SP 18300	Refer to TU 7500



* TU 10000's outer dimensions according to ISO 11901 standard.

The thread in the piston rod top is to be used for maintenance only.

Millimeters to Inches: mm ÷ 25.4 = inches
Kilograms to Pounds: Kg ÷ 0.45 = pounds
Pounds Force to DecaNewtons: LbF x 0.4448 = decaNewtons

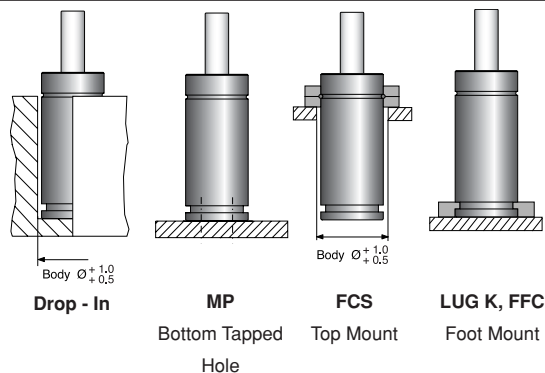
Order No.	S Stroke	Pounds Force (lbF) at 2175 psi		L ± 0.25	L min	Gas vol. (l)	Weight (kg)	ISO
		Initial	End force**					
TU 10000-025	25	23830	31020	210	185	0.87	36.5	
TU 10000-038	38.1		32150	236.2	198.1	1.13	38.5	
TU 10000-050	50		33050	260	210	1.37	40.0	✓
TU 10000-063	63.5		33720	287	223.5	1.64	42.0	
TU 10000-080	80		34170	320	240	1.98	44.0	✓
TU 10000-100	100		35070	360	260	2.38	46.5	✓
TU 10000-125	125		35300	410	285	2.88	50.0	✓
TU 10000-160	160		35520	480	320	3.59	54.5	✓
TU 10000-200	200		35970	560	360	4.39	60.0	✓
TU 10000-250	250		35970	660	410	5.40	66.5	✓
TU 10000-300	300	35970	760	460	6.40	73.0	✓	

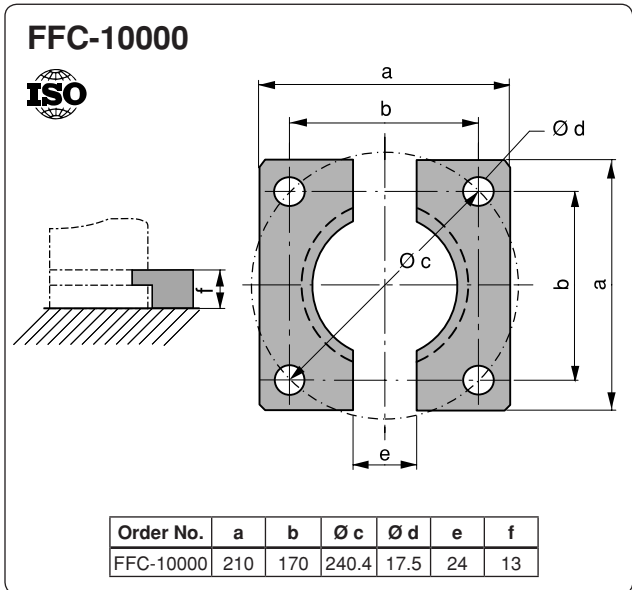
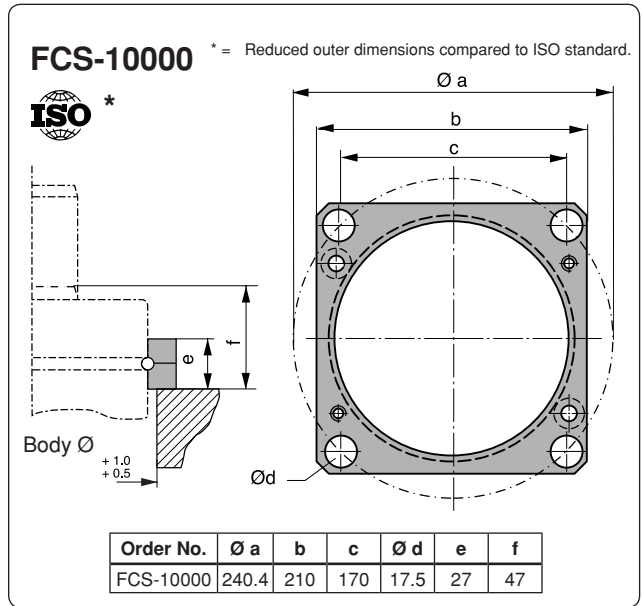
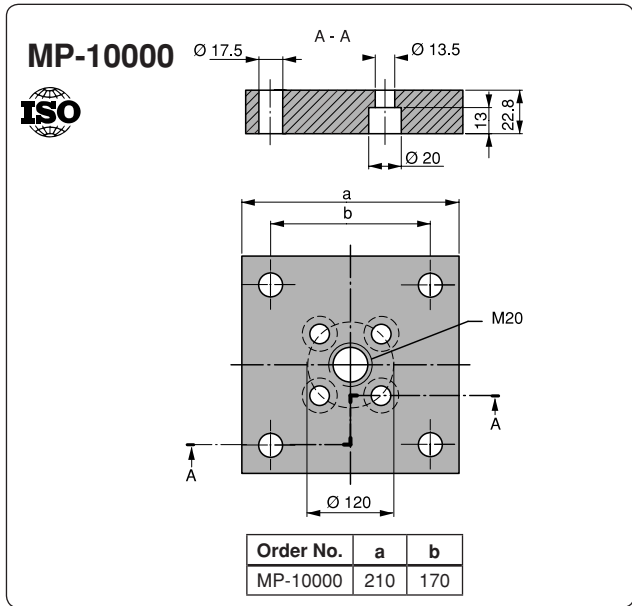
** = at full stroke

BASIC INFORMATION

Pressure medium Nitrogen
 Max. charging pressure 150 bar/2175 psi
 Min. charging pressure 25 bar/360 psi
 Operating temperature 0 - 80°C/0 - 176°F
 Force increase by temperature ±0.3%/°C
 Recommended max strokes/min ~ 15-40
 Max piston rod velocity 1.6 m/s
 Tube Black oxide
 Repair kit TU 10000

MOUNTING POSSIBILITIES





Note: For dimensions on mounting possibility LUG K, refer to chapter 3.